

Esig025 Form Filling Automation Tool

Accelerate outcomes and add value to your organization with Esig025 Form Filling Automation Tool



In a world where tax is more important than ever, your compliance with regulatory requirements shouldn't be a burden. Manual data entry can be a time-consuming and error-prone process we can and must automate.

PwC reimagined what best-in-class compliance and reporting looks like, fully automating the Esig025 form filling process in line with the legislation and applicable regulations.

Our approach addresses the entirety of the filling in process on the tax system.

From data entry and reporting, to the compliance with the regulations in place, we built and tailored our tool and expertise to revolutionize the way you work with data, all while guaranteeing security, speed and precision.



Automated Data Entry

Esig025 Form Filling Automation eliminates the need for manual data entry. Simply prepare the input, and it retrieves and fills in all the relevant data, saving you time and reducing errors.



Data Validation

Ensures data accuracy and correct formatting by cross-referencing and validating the information retrieved to reduce the risk of errors and inconsistencies.



Security

Your data is safe with You. This solution is hosted on-premise, with no associated database. User authentication is implemented using a device certificate, guaranteeing that only authorized users have access to the application.



Speed/Performance

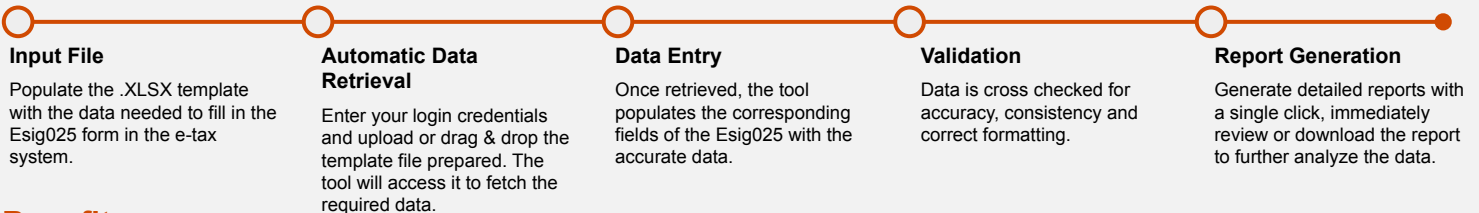
Experience lightning-fast data retrieval and entry, significantly reducing processing time.



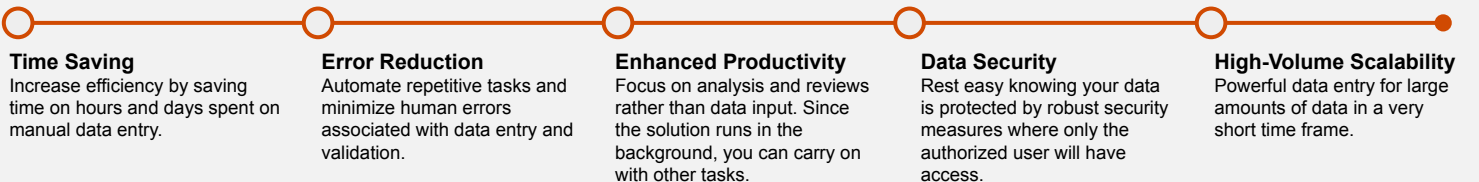
Insights/Report Generation

Automatically generates comprehensive reports based on the updated fields, saving you even more time and effort when reviewing.

How it works



Benefits

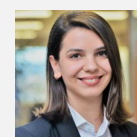


Reach out for a meeting and discuss the possibility of redeeming your two-week free trial of the tool:



Mirjeta Emini

Director
Tax Services
mirjeta.emini@pwc.com



Edlira Bizhga

Senior Manager
Tax Technology
edlira.b.bizhga@pwc.com