



# Meet and connect with our **broader team**



## Jochem Rossel

Tax & Legal Services Leader, Dubai, PwC Middle East

+971 50 225 6909

[Send an E-mail](#)



## Chadi Abou Chakra

Middle East Indirect Tax Network Leader, KSA, PwC Middle East

+966 11 211 0400 Ext: 1858

[Send an E-mail](#)



## Sajid Khan

International Tax and Qatar Tax Leader, Doha, PwC Middle East

+974 662 6234

[Send an E-mail](#)



## Dima Maruf

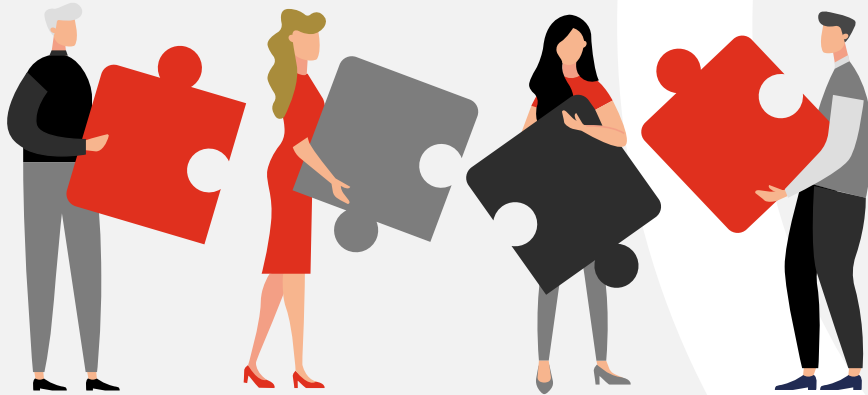
Partner, Indirect Taxes, PwC Middle East

+974 5115 9041

[Send an E-mail](#)



# The **ITX** team



**Dima Maruf**

Partner, Indirect Taxes, PwC Middle East

+974 5115 9041

dima.i.maruf@pwc.com



**Anukool Joshi**

Indirect Tax Manager, Tax & Legal Services, PwC Middle East

+971 50 726 8985

anukool.joshi@pwc.com



**Dania Al-Sughaier**

Indirect Tax Manager, Tax & Legal Services, PwC Middle East

+974 3326 7379

dania.al-sughaier@pwc.com